

*The*  
**MAINE**  
OYSTER BAR & GRILL



**ELDERFLOWER TINI**

*Tanqueray Gin, Bianco Vermouth,  
Elderflower, Lime Juice*

**75**



**DIRTY PICKLE MARTINI**

*Ketel One Vodka or Tanqueray Gin,  
Dry Vermouth, Pickled Carrot*

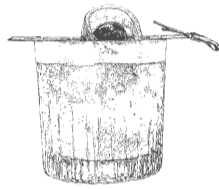
**75**



**GOLDEN MARTINI**

*Seventy One Gin, Rosé Champagne,  
Honey Water*

**120**



**APEROL SOUR**

*Aperol, Lemon Juice,  
Aromatic Bitters, Sugar*

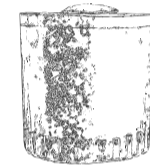
**75**



**BLOODY SHELL**

*Ketel One Vodka, Bloody Mary Mix, Tomato  
& Clamato Juice, Lemon Juice*

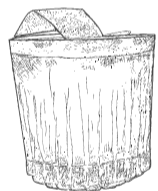
**90**



**PLYMOUTH SLING**

*Casamigos Blanco Tequila, Suze Liqueur,  
Yuzu, Jalapeno Agave*

**80**



**OLD FASHIONED**

*Wild Turkey 81 Bourbon, Aromatic  
& Orange Bitters, Demerara Sugar*

**80**



**NEGRONI**

*Tanqueray Gin, Campari, THE MAINE  
Sweet Vermouth Blend*

**80**



**GINGER MULE**

*Ketel One Vodka, Aromatic Bitters,  
Ginger Beer, Lime Juice*

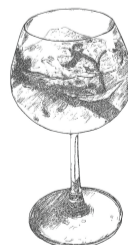
**75**



**HOUSE PICANTE**

*El Jimador Tequila, Agave Syrup,  
Lime Juice, Habanero Reduction*

**75**



- LOW % -

**SKINNY CUCUMBER COOLER**

*Elderflower Cordial, Fresh Cucumber,  
Prosecco, Soda Water*

**75**



- 0% -

**HIGHBUSH ELDERFLOWER**

*Dark Berry Mix, Fresh Juice Mix,  
Elderflower Cordial, Citrus*

**60**

ALL PRICES ARE INCLUSIVE OF 5% VAT, 10% SERVICE CHARGE AND 7% MUNICIPALITY FEES  
الأسعار تشمل (5%) ضريبة القيمة المضافة (10%) مقابل بدل الخدمة (7%) رسوم البلدية

- DRINK RESPONSIBLY -

FINE WINES & LIQUORS
THE MAINE & CO
PROPERTY OF THE NEW ENGLAND BRASSERIE CO.

*Joey's Fancy*

*The*  
**MAINE**  
OYSTER BAR & GRILL

Menu Version No.  
**143652**

DOUBLETREE  
BY  
HILTON

**SPARKLING & CHAMPAGNE**

	gls	btl
<i>Casa Defrà, Prosecco, Italy</i>	<b>60</b>	<b>330</b>
<i>Laurent Perrier La Cuvée Brut, Champagne, France</i>	<b>140</b>	<b>750</b>
<i>Bollinger Special Cuvée Brut, Champagne, France</i>		<b>1500</b>
<i>Taittinger Prestige Rosé Brut, Champagne, France</i>		<b>1600</b>
<i>Pol Roger Brut, Champagne, France</i>		<b>1700</b>
<i>Perrier-jouet Blanc De Blanc, Champagne, France</i>		<b>2300</b>
<i>Laurent Perrier Cuvée Rosé, Champagne, France</i>		<b>3000</b>
<i>Pol Roger Cuvée Sir Winston Churchill, Champagne, France</i>		<b>6700</b>

**MAGNUM CHAMPAGNE**

	btl
<i>Laurent Perrier, La Cuvée Magnum, Brut</i>	<b>1500</b>

**ROSÉ**

	gls	btl
<i>Le Rosé, Casa Lapostolle, CHI</i>	<b>65</b>	<b>315</b>
<i>M de Minuty, Côtes de Provence, FRA</i>	<b>90</b>	<b>430</b>
<i>Ultimate Provence, Côtes de Provence, FRA</i>		<b>620</b>

**WHITE WINES**

	gls	btl
<i>Wild House, Chenin Blanc, Wildelberg, Western Cape, South Africa</i>	<b>50</b>	<b>220</b>
<i>Journey's End Chardonnay, South Africa</i>	<b>60</b>	<b>270</b>
<i>Beringer, Chardonnay, United States</i>	<b>65</b>	<b>300</b>
<i>Alamos, Viognier, Mendoza, Argentina</i>	<b>70</b>	<b>330</b>
<i>Babydoll, Sauvignon Blanc, Marlborough, New Zealand</i>	<b>80</b>	<b>380</b>
<i>Louis Latour, Chardonnay, ardeche, Rhone, France</i>		<b>450</b>
<i>Ca Montini, Pinot Grigio, Valfreda, Trentino Alto Adige, Italy</i>		<b>490</b>
<i>Etienne Guigal, Viognier, Cotes-du-rhone, France</i>		<b>610</b>
<i>Villa Sparina Gavi Di Gavi, Cortese, Piedmont, Italy</i>		<b>665</b>
<i>Andre Dezat &amp; Fils, Sancerre, France</i>		<b>690</b>
<i>Kaiken Ultra, chardonnay, Argentina</i>		<b>710</b>
<i>Hugel Et Fils, Pinot Gris, Alsace, France</i>		<b>730</b>
<i>Chablis Michel Laroche Et Ses Enfants, France</i>		<b>740</b>
<i>Domaine Tassin, Sancerre Blanc, France</i>		<b>750</b>
<i>Louis Latour, Chardonnay, Macon Village, Burgundy, France</i>		<b>770</b>
<i>Terras Gaudas Trinchero, Albariño, O'rosal, Spain</i>		<b>780</b>
<i>Marco Felluga, Sauvignon Blanc, Russiz Superiore</i>		<b>800</b>
<i>Mm5, Furmint Dry, Mad Moser, Hungary</i>		<b>810</b>
<i>La Crema, Chardonnay, Sonoma Coast, United States</i>		<b>1015</b>
<i>Beaulieu Vineyards, Sauvignon Blanc, Napa Valley, United States</i>		<b>1130</b>
<i>Maison Antoine Geoffrey, Chardonnay, Burgundy, France</i>		<b>1300</b>
<i>Dr Loosen, Riesling, Ausle Wehlener Sonnenuhr, Germany</i>		<b>1400</b>

**RED WINES**

	gls	btl
<i>Wild House, Shiraz, Wildelberg, Western Cape, South Africa</i>	<b>50</b>	<b>220</b>
<i>Rioja Vega, Tempranillo, Rioja, Spain</i>	<b>58</b>	<b>260</b>
<i>Journey's End, Syrah, South Africa</i>	<b>60</b>	<b>270</b>
<i>Beringer Estate, Cabernet Sauvignon, Unites States</i>	<b>65</b>	<b>300</b>
<i>Alamos Catena, Malbec, Mendoza, Argentina</i>	<b>70</b>	<b>330</b>
<i>Tenuta Sallier De La Tour, Nero D'avola, Sicily, Italy</i>		<b>400</b>
<i>Ronan By Clinet, Bordeaux, France</i>		<b>450</b>
<i>Cabriz, Alfrocheiro Blend, Reserva Tinto, Portugal</i>		<b>470</b>
<i>Banfi, Chianti Superiore, Italy</i>		<b>510</b>
<i>Henri Bourgeois, Cabernet Franc, Petit Bourgeois, Loire Valley, France</i>		<b>510</b>
<i>Domaine De La Janasse, Red Blend, Terre De Busière, Rhone, France</i>		<b>520</b>
<i>Regnard, Gamay, Moulin A Vent, Beaujolais, France</i>		<b>710</b>
<i>Alvaro Palacios, Grenache, La Montesa, Spain</i>		<b>750</b>
<i>Journey's End Cabernet Sauvignon, South Africa</i>		<b>840</b>
<i>Louis Latour, Bourgogne Pinot Noir, Burgundy, France</i>		<b>880</b>
<i>Goulée By Cos D'estournelle, Saint-estèphe, Bordeaux, France</i>		<b>1000</b>
<i>Chateau Talbot Grand Cru Classé, Saint-julien, Bordeaux, France</i>		<b>1400</b>
<i>Paulliac De Batailley, Chateau Batailley, Paulliac, Bordeaux, France</i>		<b>1650</b>
<i>Bouchard Pere Et Fils, Pinot Noir, Pommard, Burgundy, France</i>		<b>2180</b>
<i>Montes Folly, cabernet Sauvignon, Chile</i>		<b>2390</b>
<i>Grant Burge, cabernet Sauvignon, Shadrach, Australia</i>		<b>2570</b>
<i>Alion, Tempranillo, Vega Sicilia, Ribera Del Duero, Spain</i>		<b>2600</b>

**REGIONAL WINES**

**WHITE WINES**

	gls	btl
<i>Massaya Blanc, Sauvignon Blanc, Bekaa Valley, Lebanon</i>	<b>65</b>	<b>300</b>
<i>Bretèche De Château Kefraya, Muscat, Lebanon</i>		<b>300</b>
<i>Domaine Des Tourelles, Viognier Blend, Lebanon</i>		<b>420</b>
<i>Domaine Des Tourelles, Chardonnay, Marquis Des Beys, Lebanon</i>		<b>620</b>

**ROSE WINE**

<i>Massaya Rosé, Rosé Blend, Bekaa Valley, Lebanon</i>	<b>65</b>	<b>300</b>
<i>Chateau Ksara, Bekaa Valley, Lebanon</i>		<b>450</b>

**RED WINES**

	gls	btl
<i>Massaya Le Colombier, Bekaa Valley, Lebanon</i>	<b>85</b>	<b>420</b>
<i>Domaine Des Tourelle, Cinsault, Old Vine, Bekka Valley, Lebanon</i>		<b>600</b>
<i>Domaine Des Tourelles, Syrah Blend, Marquis Des Beys, Lebanon</i>		<b>800</b>
<i>Domaine Des Tourelle, Syrah Du Liban, Bekka Valley, Lebanon</i>		<b>950</b>
<i>Massaya Cap Est, Grenache, Bekaa Valley, Lebanon</i>		<b>980</b>

VINTAGES ARE SUBJECT TO CHANGE - OUR WINES MAY CONTAIN SULPHITES  
ALL PRICES ARE INCLUSIVE OF 5% VAT, 10% SERVICE CHARGE AND 7% MUNICIPALITY FEES  
الأسعار تشمل (5%) ضريبة القيمة المضافة (10%) مقابل بدل الخدمة (7%) رسوم البلدية

